

poseidon system  
supreme for  
water application

# S16

compression fittings line

by  **supreme**



poseidon system 

## GENERALITA'

I raccordi della linea S 16, destinati al trasporto di fluidi in pressione, sono caratterizzati dall'Innovativo sistema di funzionamento Poseidon (pat pending) che rende possibile bilanciare l'azione di tenuta sul tubo agendo sul livello di avvitemento della ghiera: si ottiene in questo modo la massima sicurezza di funzionamento in tutte le possibili condizioni d'uso e caratteristiche qualitative del tubo. Il raccordo si caratterizza anche per il facile e veloce montaggio, che non richiede alcuna preparazione particolare del tubo. **Gamma prodotto:** range dimensionale d.16-110mm, tutte le diverse geometrie applicative.

## INFORMAZIONI TECNICHE

### Materiali:

per la produzione dei raccordi S 16 **si utilizzano materie prime di alta qualità** che conferiscono al raccordo caratteristiche di resistenza ed affidabilità nel tempo, idoneità al contatto con l'acqua potabile e compatibilità ambientale.

**Corpi, ghiera ed anelli di spinta:** polipropilene copolimero vergine (PP-B) ad alta resistenza meccanica ed elevato grado di stabilità nel tempo. Per le ghiera colorate si utilizzano master ad alta resistenza ai raggi UV (grado 8- ASTM D2565)

**Anelli di graffaggio:** resina poliacetalica (POM) copolimero neutro, colore bianco

**Guarnizioni coniche:** gomma NBR, durezza 70sh, colore nero

**Anelle di blindatura:** solo sui filetti femmina  $\geq 1\frac{1}{4}$ , acciaio inox AISI 430

## STANDARDS DI RIFERIMENTO

**Dimensioni, caratteristiche e test funzionali:** UNI 9561, EN712 - EN713 - EN715 - EN911, ISO3458 - ISO3459 - ISO3501 - ISO3503 - ISO14236, DIN8076.3, AS/NZS 4129.

**Compatibilità tubi PE-HD (PE63-80-100), PEX-a:** UNI10910, UNI7990, EN12201-1, ISO4427, DIN8072 - DIN8074, AS/NZS4130, BS6572 - BS6730

**Filetti di tenuta idraulica (maschio e femmina):** EN12226-3 (ex ISO7/1), DIN2999.1, BS21, AS/NZS1722.1  
flange: ISO7005, DIN2501 - DIN8063.

## TEMPERATURA DI UTILIZZO

-10 / +45°C

## PRESSIONE NOMINALE (PN) E MARCHI DI QUALITA'

I raccordi della linea S 16 sono progettati ed idonei all'utilizzo con requisito PN16; sono testati ed approvati dai principali istituti internazionali di certificazione come il DVGW (Germania), IIP (Italia), WM (Australia), Kiwa (Olanda).

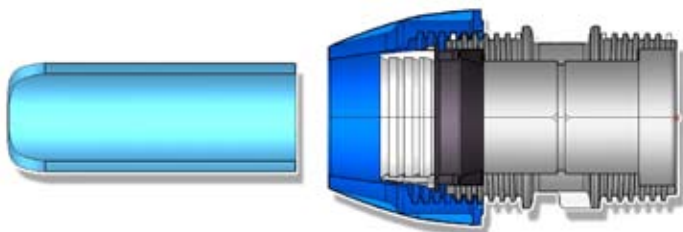
## PRESSIONE MASSIMA DI ESERCIZIO AL VARIARE DELLA TEMPERATURA DI UTILIZZO

temperatura C°	-10 /+25°C	+26/+35°C	+36/+45°C
PN	16	12,5	10
PN	12,5	10	8
PN	10	8	6

## ACQUA POTABILE

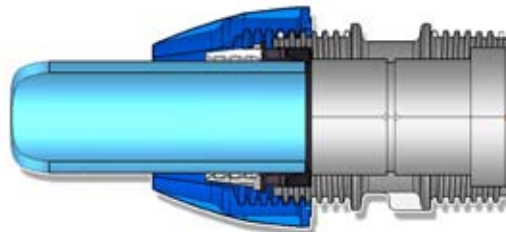
I raccordi S16 sono idonei al contatto con l'acqua potabile secondo le vigenti prescrizioni internazionali: Circolare n.102 del 2.12.1978, DM 21.3.1973 e DM174 del 6.4.2004 (Italia); Mitteilungen aus dem Bundesgesundheitsamt 108-109 mitteilung - KTW-D2 (Germania); Kiwa-ATA (Olanda); AS4020 (Australia) ecc.

## ISTRUZIONI DI MONTAGGIO - ASSEMBLY INSTRUCTIONS



1. Tagliare il tubo a squadra eliminando eventuali bave, si consiglia di smussare il tubo per  $d. \geq 75\text{mm}$ . Svitare la ghiera fino all'ultimo filetto, senza rimuoverla dal raccordo.

1. Cut the pipe square and remove the burrs; we suggest to chamfer it for  $d. \geq 75\text{mm}$ . Unscrew the nut to the last thread, leave it on the fitting while



2. Inserire il tubo superando l'anello di graffaggio fino al primo arresto: il tubo ha raggiunto l'imbocco della guarnizione conica.

2. Twist the pipe into the fitting through the grip ring till the first stop: the pipe has reached the conical gasket.

## INTRODUCTION

**S 16** compression fittings for pressure piping applications are characterized by the Innovative Balance Sealing System Poseidon (pat pending): thanks to the new technical design it is possible to balance the sealing action towards the pipe through the different tightening of the nut. This leads to the maximum safety in all the possible conditions of use and quality of the pipe, keeping the basic features of easy and fast assembly without any particular preparation of the pipe.

**Product range:** d.16-110mm, all the common items for piping applications.

## TECHNICAL SPECIFICATIONS

### Materials:

top quality raw materials are used, this makes the S 16 fittings highly resistant and reliable in time, suitable for drinking water and environment compatible.

**Body, nut, thrust ring:** virgin polypropylene (PP-B), high mechanical resistance and thermal stability in course of time. For coloured nuts, top UV resistant master-batch are used (grade 8- ASTM D2565)

**Grip ring:** copolymer polyacetal resin (POM), white colour

**Conical gasket:** rubber NBR, hardness 70sh, black colour

**Reinforcement ring:** only for female threads  $\geq 1\frac{1}{4}$ , stainless steel AISI 430

## STANDARDS

**Dimensions, features and functional tests:** UNI 9561, EN712 - EN713 - EN715 - EN911, ISO3458 – ISO3459 – ISO3501 – ISO3503 – ISO14236, DIN8076.3, AS/NZS 4129.

**Pipe compatibility, PE-HD (PE63-80-100), PEX-a:** UNI10910, UNI7990, EN12201-1, ISO4427, DIN8072 - DIN8074, AS/NZS4130, BS6572 – BS6730

**Sealing threads (male and female):** EN12226-3 (ex ISO7/1), DIN2999.1, BS21, AS/NZS1722.1

**Flange:** ISO7005, DIN2501 – DIN8063.

## WORKING TEMPERATURE

-10 / +45°C

## NOMINAL PRESSURE (PN) AND PRODUCT APPROVALS

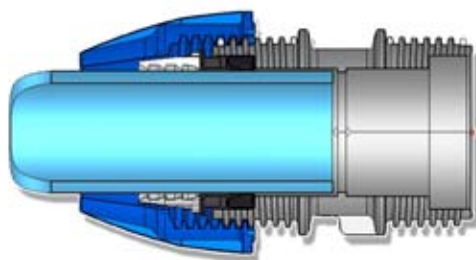
S 16 fittings are designed and suitable to be used at PN16 pressure rate; fittings are tested and certified by major international approval institutions, such as DVGW (Germany), IIP (Italy), WM (Australia), Kiwa (Holland).

## WORKING PRESSURE AND TEMPERATURE

temperatura C°	-10 /+25°C	+26/+35 °C	+36/+45 °C
PN	16	12,5	10
PN	12,5	10	8
PN	10	8	6

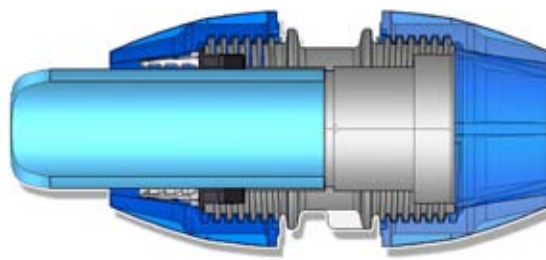
## DRINKING WATER

Poseidon fittings are suitable to be in contact with potable water, according to the main international sanitary requirements, such as: Circolare n.102 del 2.12.1978, DM 21.3.1973 e DM174 del 6.4.2004 (Italy); Mitteilungen aus dem Bundesgesundheitsamt 108-109 mitteilung – KTW-D2 (Germany); Kiwa-ATA (Holland); AS4020 (Australia), FDA (USA).



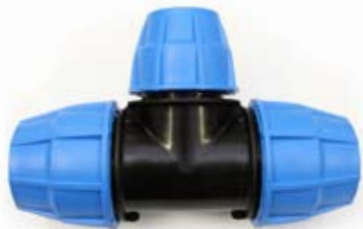
**3.** Inserire il tubo a fondo, fino al secondo arresto: si è raggiunta la battuta nel raccordo, il tubo è a fine corsa.

*3. the pipe through the gasket till the second stop:  
You have reached the pipe stop of the fitting*



**4.** Avvitare la ghiera serrandola a fondo, a mano o con chiavi standard fino al d.32mm, con chiavi standard oltre d.>= 40

*4. Tighten the nut firmly, by hand or standard tool up to 32mm,  
by standard tool for d.>= 40*



Cod. S075

## REDUCING TEE - TEE RIDOTTO A 90°

Code	Description	€	Bag	Box	Type Box*
S075020016	D.20X16X20	<b>4,79</b>	20	80	B
S075025020	D.25X20X25	<b>4,88</b>	10	60	B
S075032025	D.32X25X32	<b>5,45</b>	10	40	B
S075040032	D.40X32X40	<b>10,70</b>	0	21	B
S075050040	D.50X40X50	<b>14,38</b>	0	14	B
S075063050	D.63X50X63	<b>19,00</b>	0	8	B
S075075063	D.75X63X75	<b>35,60</b>	0	8	A
S075090075	D.90X75X90	<b>56,59</b>	0	5	A
S075110063	110X63X110	<b>100,54</b>	0	4	A
S075110090	110X90X110	<b>100,54</b>	0	4	A



Cod. S080

## 90° TEE - TEE A 90°

Code	Description	€	Bag	Box	Type Box*
S080016016	D.16X16X16	<b>3,71</b>	30	150	B
S080020020	D.20X20X20	<b>3,79</b>	20	80	B
S080025025	D.25X25X25	<b>5,00</b>	10	60	B
S080032032	D.32X32X32	<b>6,47</b>	10	30	B
S080040040	D.40X40X40	<b>10,70</b>	0	20	B
S080050050	D.50X50X50	<b>14,38</b>	0	12	B
S080063063	D.63X63X63	<b>20,49</b>	0	8	B
S080075075	D.75X75X75	<b>35,60</b>	0	8	A
S080090090	D.90X90X90	<b>49,71</b>	0	5	A
S080110110	D.110X110X110	<b>95,86</b>	0	4	A



Cod. S085

## 90° FEMALE TEE - TEE FEMMINA A 90°

Code	Description	€	Bag	Box	Type Box*
S085016012	D.16x1/2"x16	<b>2,95</b>	30	180	B
S085016034	D.16x3/4"x16	<b>2,95</b>	30	180	B
S085020012	D.20x1/2"x20	<b>3,28</b>	20	100	B
S085020034	D.20x3/4"x20	<b>3,28</b>	20	100	B
S085025012	D.25x1/2"x25	<b>4,25</b>	10	80	B
S085025034	D.25x3/4"x25	<b>4,25</b>	10	80	B
S085025100	D.25x1"x25	<b>4,66</b>	10	80	B
S085032012	D.32x1/2"x32	<b>5,27</b>	10	50	B
S085032034	D.32x3/4"x32	<b>5,27</b>	10	50	B
S085032100	D.32x1"x32	<b>5,27</b>	10	50	B
S085032114	D.32x1" 1/4x32	<b>6,61</b>	10	50	B
S085040100	D.40X1"X40	<b>10,05</b>	0	28	B
S085040114	D.40X1"1/4X40	<b>10,05</b>	0	28	B
S085040112	D.40X1"1/2X40	<b>10,82</b>	0	25	B
S085050114	D.50X1"1/4X50	<b>13,43</b>	0	18	B
S085050112	D.50X1"1/2X50	<b>13,43</b>	0	18	B
S085050200	D.50X2"X50	<b>15,02</b>	0	15	B
S085063112	D.63X1"1/2X63	<b>19,17</b>	0	10	B
S085063200	D.63X2"X63	<b>19,17</b>	0	10	B
S085063212	D.63X2"1/2X63	<b>24,54</b>	0	10	B
S085075200	D.75X2"X75	<b>33,21</b>	0	12	A
S085075212	D.75X2"1/2X75	<b>33,21</b>	0	12	A
S085075300	D.75X3"X75	<b>33,21</b>	0	9	A
S085090212	D.90°X2"1/2X90°	<b>51,50</b>	0	8	A
S085090300	D.90X3"X90	<b>51,50</b>	0	8	A
S085110300	D.110X3"X110	<b>77,66</b>	0	6	A
S085110400	D.110X4"X110	<b>77,66</b>	0	6	A

## COUPLING - MANICOTTO



Cod. S105

Code	Description	€	Bag	Box	Type Box*
S105016000	D.16	<b>2,10</b>	30	300	B
S105020000	D.20	<b>2,92</b>	20	160	B
S105025000	D.25	<b>3,49</b>	10	100	B
S105032000	D.32	<b>4,49</b>	10	60	B
S105040000	D.40	<b>7,25</b>	0	40	B
S105050000	D.50	<b>9,86</b>	0	25	B
S105063000	D.63	<b>13,68</b>	0	15	B
S105075000	D.75	<b>25,75</b>	0	16	A
S105090000	D.90	<b>31,86</b>	0	12	A
S105110000	D.110	<b>68,18</b>	0	8	A



Cod. S090

## 90° MALE TEE - TEE MASCHIO A 90°

Code	Description	€	Bag	Box	Type Box*
S090016012	D.16X1/2"X16	3,04	30	210	B
S090016034	D.16X3/4"X16	3,04	30	180	B
S090020012	D.20X1/2"X20	3,20	20	100	B
S090020034	D.20X3/4"X20	3,20	20	100	B
S090025012	D.25X1/2"X25	4,18	10	80	B
S090025034	D.25X3/4"X25	4,18	10	80	B
S090025100	D.25X1"X25	4,18	10	70	B
S090032012	D.32X1/2"X32	5,18	10	50	B
S090032034	D.32X3/4"X32	5,18	10	50	B
S090032100	D.32X1"X32	5,18	10	50	B
S090032114	D.32X1"1/4X32	5,55	10	40	B
S090040100	D.40X1"X40	9,12	0	28	B
S090040114	D.40X1"1/4X40	9,12	0	28	B
S090040112	D.40X1"1/2X40	9,86	0	25	B
S090050114	D.50X1"1/4X50	12,93	0	18	B
S090050112	D.50X1"1/2X50	12,93	0	18	B
S090050200	D.50X2"X50	13,97	0	15	B
S090063112	D.63X1"1/2X63	25,04	0	10	B
S090063200	D.63X2"X63	25,04	0	10	B
S090063212	D.63X2"1/2X63	25,04	0	10	B
S090075212	D.75X2"1/2X75	37,60	0	12	A
S090075300	D.75X3"X75	37,60	0	9	A
S090090300	D.90X3"X90	54,84	0	7	A
S090110400	D.110x4"x110	90,02	0	5	A



Cod. S125

## 90° FEMALE ELBOW - GOMITO FEMMINA A 90°

Code	Description	€	Bag	Box	Type Box*
S125016012	D.16x1/2"	1,88	30	300	B
S125016034	D.16x3/4"	1,88	30	300	B
S125020012	D.20x1/2"	2,24	20	200	B
S125020034	D.20x3/4"	2,24	20	200	B
S125025012	D.25x1/2"	2,69	10	150	B
S125025034	D.25x3/4"	2,69	10	150	B
S125025100	D.25x1"	2,69	10	130	B
S125032012	D.32x1/2"	3,24	10	90	B
S125032034	D.32x3/4"	3,24	10	90	B
S125032100	D.32x1"	3,24	10	90	B
S125032114	D.32x1"1/4	4,62	10	80	B
S125040100	D.40x1"	6,93	0	45	B
S125040114	D.40x1"1/4	6,93	0	45	B
S125040112	D.40x1"1/2	6,93	0	40	B
S125050114	D.50x1"1/4	9,22	0	30	B
S125050112	D.50x1"1/2	9,22	0	30	B
S125050200	D.50x2"	9,22	0	25	B
S125063112	D.63x1"1/2	12,52	0	17	B
S125063200	D.63x2"	12,52	0	17	B
S125063212	D.63x2"1/2	12,52	0	15	B
S125075212	D.75x2"1/2	21,68	0	22	A
S125075300	D.75x3"	21,68	0	20	A
S125090300	D.90x3"	40,09	0	12	A
S125090400	D.90x4"	40,09	0	10	A
S125110400	D.110x4"	62,13	0	8	A



Cod. S110

## REDUCING COUPLING - MANICOTTO RIDOTTO

Code	Description	€	Bag	Box	Type Box*
S110020016	D.20x16	2,93	20	180	B
S110025016	D.25x16	3,10	10	120	B
S110025020	D.25x20	3,10	10	120	B
S110032020	D.32x20	4,19	10	80	B
S110032025	D.32x25	4,19	10	80	B
S110040025	D.40x25	7,01	0	45	B
S110040032	D.40x32	7,01	0	40	B
S110050032	D.50x32	9,09	0	30	B
S110050040	D.50x40	9,09	0	30	B
S110063032	D.63x32	12,91	0	20	B
S110063040	RD.63x40	12,91	0	15	B
S110063050	D.63x50	12,91	0	15	B
S110075050	D.75x50	23,48	0	18	A
S110075063	D.75x63	23,48	0	18	A
S110090063	D.90x63	31,09	0	12	A
S110090075	D.90x75	31,09	0	12	A
S110110063	D.110x63	65,17	0	9	A
S110110075	D.110x75	65,17	0	9	A
S110110090	D.110x90	65,17	0	9	A

## MALE ADAPTOR - RACCORDO MASCHIO



Cod. S095

Code	Description	€	Bag	Box	Type Box*
S095016012	D.16x1/2"	1,40	30	450	B
S095016034	D.16x3/4"	1,40	30	360	B
S095020012	D.20x1/2"	1,66	20	280	B
S095020034	D.20x3/4"	1,66	20	280	B
S095025012	D.25x1/2"	1,92	10	200	B
S095025034	D.25x3/4"	1,92	10	200	B
S095025100	D.25x1"	1,92	10	200	B
S095032012	D.32x1/2"	2,45	10	100	B
S095032034	D.32x3/4"	2,45	10	120	B
S095032100	D.32x1"	2,45	10	120	B
S095032114	D.32x1"1/4	2,69	10	100	B
S095032112	D.32x1"1/2	2,98	10	100	B
S095040100	D.40x1"	4,49	0	60	B
S095040114	D.40x1"1/4	4,49	0	60	B
S095040112	D.40x1"1/2	4,49	0	55	B
S095040200	D.40x2"	4,68	0	50	B
S095050114	D.50x1"1/4	5,90	0	35	B
S095050112	D.50x1"1/2	5,90	0	35	B
S095050200	D.50x2"	5,90	0	35	B
S095063114	D.63x1"1/4	8,41	0	24	B
S095063112	D.63x1"1/2	8,41	0	24	B
S095063200	D.63x2"	8,41	0	24	B
S095063212	D.63x2"1/2	8,41	0	20	B
S095075200	D.75x2"	16,69	0	30	A
S095075212	D.75x2"1/2	16,69	0	30	A
S095075300	D.75x3"	16,69	0	25	A
S095090200	D.90x2"	19,72	0	16	A
S095090212	D.90x2"1/2	19,72	0	16	A
S095090300	D.90x3"	19,72	0	16	A
S095090400	D.90x4"	23,57	0	16	A
S095110200	D.110x2"	38,91	0	12	A
S095110300	D.110x3"	38,91	0	12	A
S095110400	D.110x4"	38,91	0	12	A

## FEMALE ADAPTOR - RACCORDO FEMMINA



Cod. S100

Code	Description	€	Bag	Box	Type Box*
S100016012	D.16X1/2"	1,64	30	360	B
S100016034	D.16X3/4"	1,64	30	360	B
S100020012	D.20X1/2"	1,99	20	280	B
S100020034	D.20X3/4"	1,99	20	240	B
S100025012	D.25X1/2"	2,21	10	200	B
S100025034	D.25X3/4"	2,21	10	200	B
S100025100	D.25X1"	2,21	10	180	B
S100032012	D.32X1/2"	2,69	10	120	B
S100032034	D.32X3/4"	2,69	10	120	B
S100032100	D.32X1"	2,69	10	120	B
S100032114	D.32X1"1/4	3,73	10	100	B
S100040100	D.40X1"	4,61	0	60	B
S100040114	D.40X1"1/4	4,61	0	60	B
S100040112	D.40X1"1/2	4,61	0	50	B
S100050114	D.50X1"1/4	6,54	0	35	B
S100050112	D.50X1"1/2	6,54	0	35	B
S100050200	D.50X2"	6,54	0	35	B
S100063112	D.63X1"1/2	9,24	0	24	B
S100063200	D.63X2"	9,24	0	24	B
S100063212	D.63X2"1/2	9,24	0	20	B
S100075200	D.75X2"	18,36	0	30	A
S100075212	D.75X2"1/2	18,36	0	25	A
S100075300	D.75X3"	18,36	0	16	A
S100090200	D.90X2"	22,50	0	16	A
S100090212	D.90X2"1/2	22,50	0	16	A
S100090300	D.90X3"	22,50	0	16	A
S100090400	D.90X4"	22,50	0	16	A
S100110200	D.110X2"	53,36	0	12	A
S100110300	D.110X3"	53,36	0	12	A
S100110400	D.110X4"	53,36	0	12	A



Cod. S135

## FLANGED JOINT - RACCORDO FLANGIATO

Code	Description	€	Bag	Box	Type Box*
S135050112	D.50X1"1/2	44,43	0	20	B
S135050200	D.50X2"	44,43	0	15	B
S135063200	D.63X2"	49,10	0	15	B
S135075212	D.75X2"1/2	63,13	0	10	A
S135090300	D.90X3"	87,68	0	6	A
S135090400	D.90X4"	102,88	0	6	A
S135110400	D.110X4"	114,58	0	5	A



Cod. S106

## REPARATION COUPLING - MANICOTTO DI RIPARAZIONE

Code	Description	€	Bag	Box	Type Box*
S106020000	D.20	3,69	20	160	B
S106025000	D.25	4,34	10	100	B
S106032000	D.32	5,64	10	60	B
S106040000	D.40	8,98	0	40	B
S106050000	D.50	12,38	0	25	B
S106063000	D.63	16,33	0	15	B
S106075000	D.75	31,23	0	16	A
S106090000	D.90	39,73	0	12	A
S106110000	D.110	81,42	0	8	A



Cod. S120

## 90° ELBOW - GOMITO A 90°

Code	Description	€	Bag	Box	Type Box*
S120016000	D.16	2,27	30	240	B
S120020000	D.20	2,92	20	120	B
S120025000	D.25	3,54	10	100	B
S120032000	D.32	4,42	10	60	B
S120040000	D.40	7,62	0	30	B
S120050000	D.50	10,70	0	20	B
S120063000	D.63	12,95	0	12	B
S120075000	D.75	25,07	0	12	A
S120090000	D.90	31,09	0	8	A
S120110000	D.110	64,36	0	6	A



Cod. S130

## 90° MALE ELBOW - GOMITO MASCHIO A 90°

Code	Description	€	Bag	Box	Type Box*
S130016012	D.16X1/2"	1,86	30	360	B
S130016034	D.16X3/4"	1,86	30	360	B
S130020012	D.20X1/2"	1,88	20	200	B
S130020034	D.20X3/4"	1,88	20	200	B
S130025012	D.25X1/2"	2,31	10	150	B
S130025034	D.25X3/4"	2,31	10	150	B
S130025100	D.25X1"	2,31	10	130	B
S130032012	D.32X1/2"	2,99	10	90	B
S130032034	D.32X3/4"	2,99	10	90	B
S130032100	D.32X1"	2,99	10	90	B
S130032114	D.32X1"1/4	3,18	10	80	B
S130040100	D.40X1"	4,79	0	45	B
S130040114	D.40X1"1/4	4,79	0	45	B
S130040112	D.40X1"1/2	4,79	0	40	B
S130050114	D.50X1"1/4	6,56	0	30	B
S130050112	D.50X1"1/2	6,56	0	30	B
S130050200	D.50X2"	6,56	0	25	B
S130063112	D.63X1"1/2	9,12	0	17	B
S130063200	D.63X2"	9,12	0	17	B
S130063212	D.63X2"1/2	9,12	0	15	B
S130075212	D.75X2"1/2	19,29	0	22	A
S130075300	D.75X3"	19,29	0	20	A
S130090300	D.90X3"	24,21	0	12	A
S130090400	D.90X4"	24,21	0	10	A
S130110400	D.110X4	47,01	0	8	A



Cod. S115

## END CAP - TAPPO

Code	Description	€	Bag	Box	Type Box*
S115016000	D.16	1,52	30	450	B
S115020000	D.20	2,08	20	280	B
S115025000	D.25	2,24	10	200	B
S115032000	D.32	2,69	10	120	B
S115040000	D.40	4,49	0	60	B
S115050000	D.50	6,62	0	40	B
S115063000	D.63	8,95	0	24	B
S115075000	D.75	21,22	0	15	A
S115090000	D.90	24,29	0	10	A
S115110000	D.110	52,31	0	6	A

## VICTAULIC JOINT - GIUNTO VICTAULIC

Code	Description	€	Bag	Box	Type Box*
S134063200	D.63X2"	8,53	0	24	B
S134110400	D.110X4"	47,47	0	12	A

\* Type box A = 0,100 m<sup>3</sup>; Type box B = 0,050 m<sup>3</sup>



Supreme Aquaservice S.r.l.  
via Del Rondone, 1  
40122 **Bologna** - Italy

ph +39 (0)51 6494136  
fax +39 (0)51 5280673  
**[www.supreme-systems.net](http://www.supreme-systems.net)**  
[info@supreme-systems.net](mailto:info@supreme-systems.net)  
PIVA 02863291205